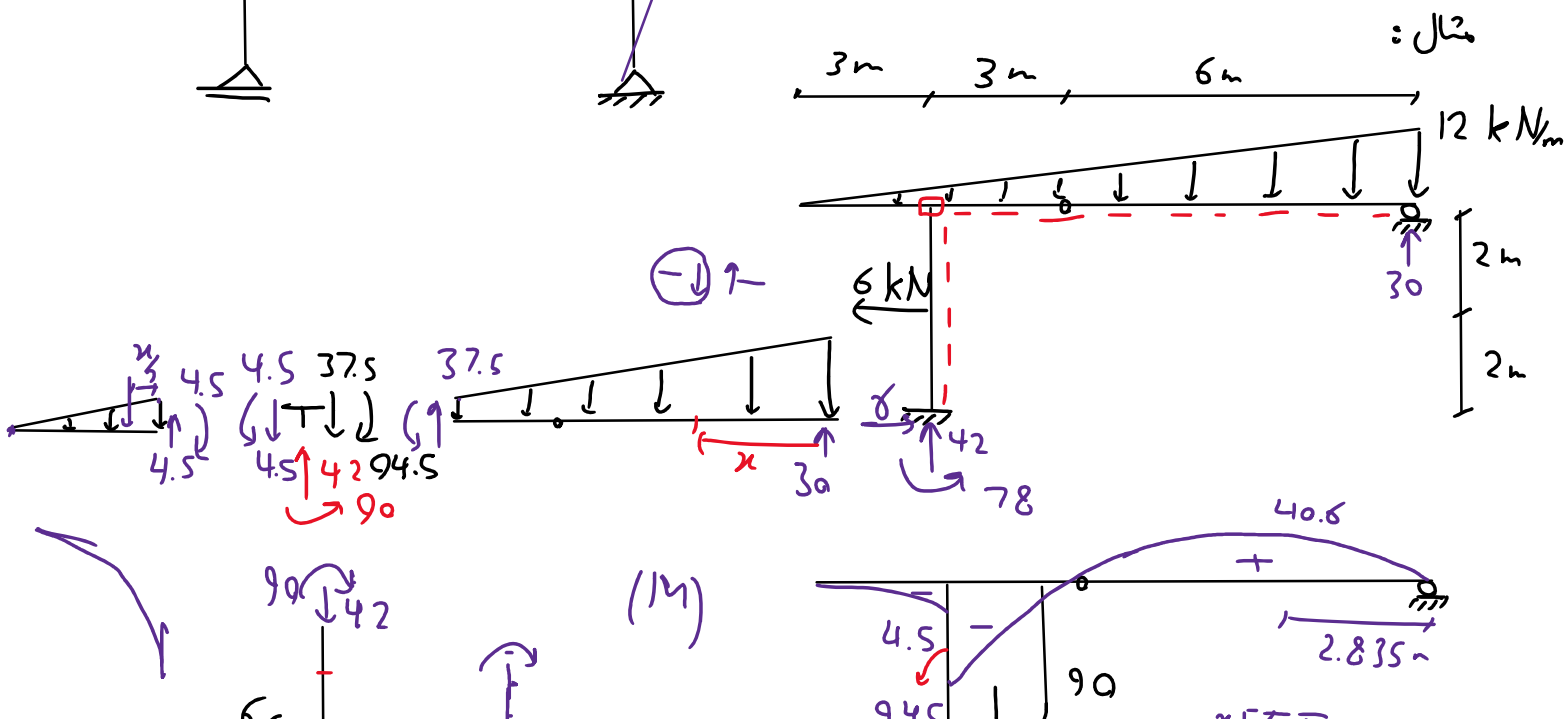
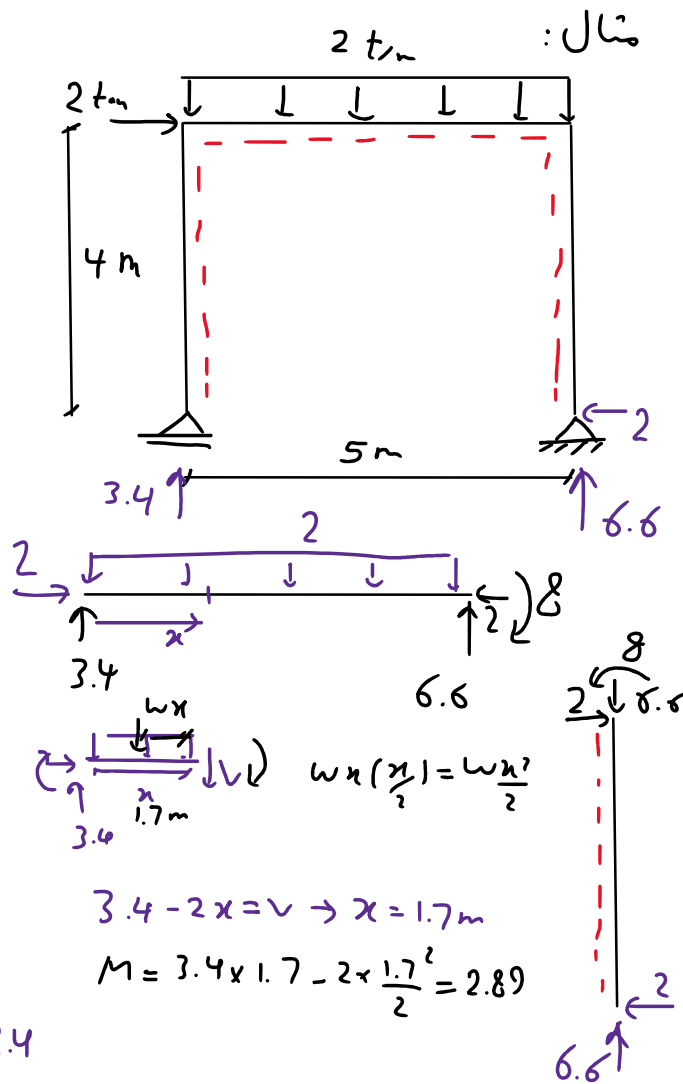
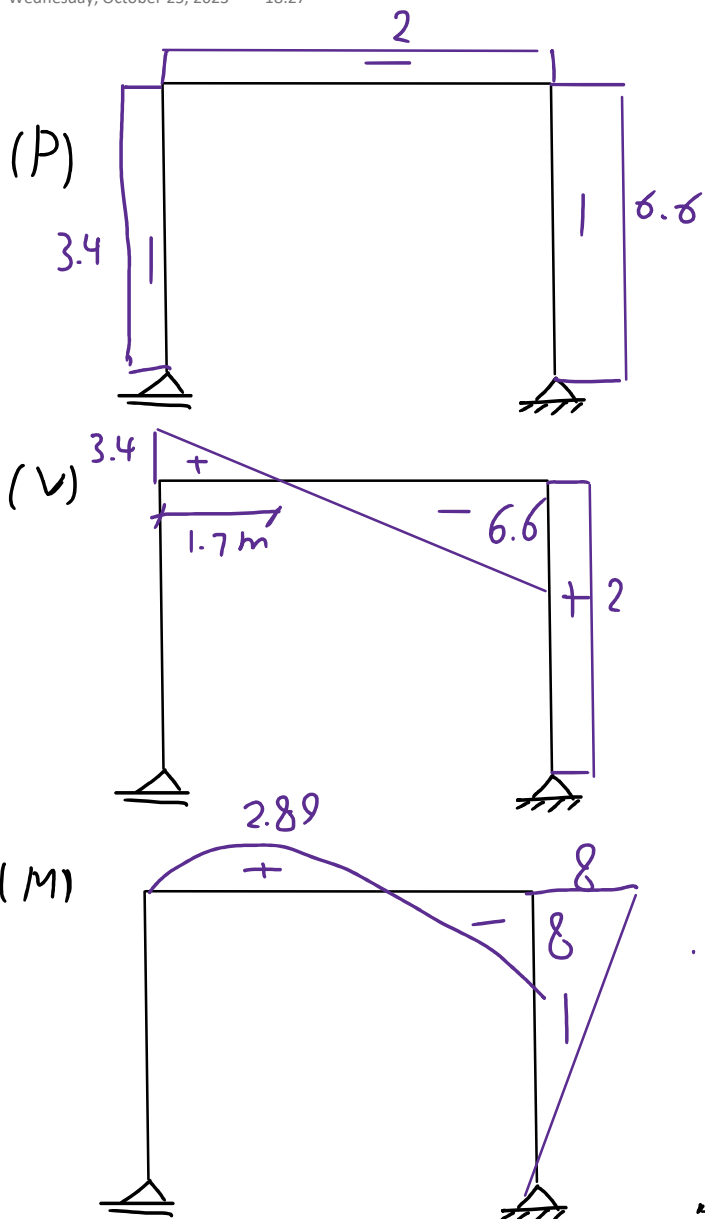
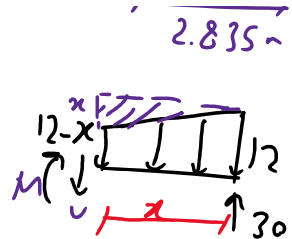
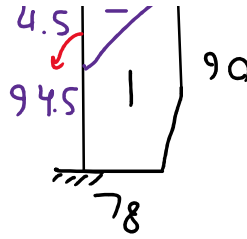
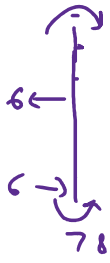
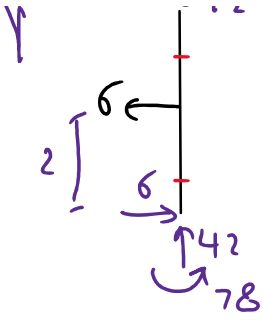


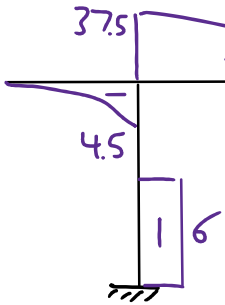
Frame

Wednesday, October 25, 2023 18:27





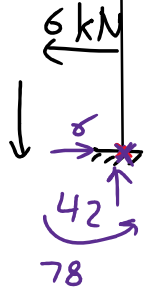
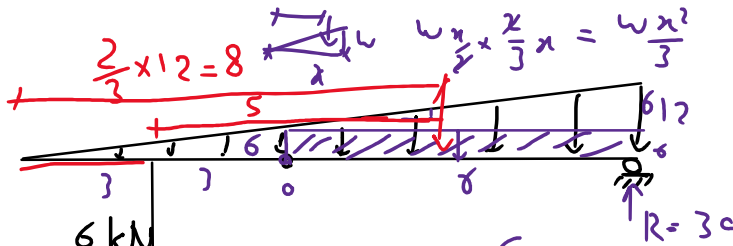
(V)



$$V = 30 - \int_0^x (12 - x) dx = 30 - (12x - \frac{x^2}{2}) = 0$$

$$\frac{x^2}{2} - 12x + 30 = 0 \rightarrow x = \frac{12 \pm 9.165}{1} = 2.835$$

$$M = 30x - 6x^2 + \frac{x^3}{6} = 40.6$$



$$36 \times 3 + 6 \times \frac{6^2}{3} = 6R \rightarrow R = 30$$

$$\frac{1}{2} \times 12 \times 12 - 30 = R$$

$$72 \times 5 - 30 \times 9 - 6 \times 12 =$$