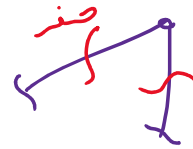
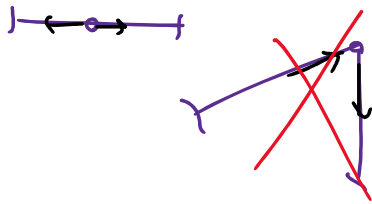


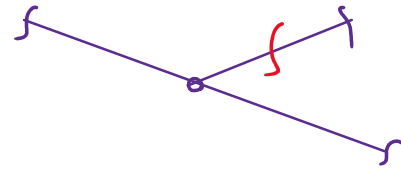
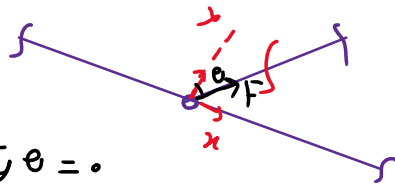
تحليل خرابا معین

روش آبلیل خرابا معین } روش گره (1)
 روش مقطع (2) *تریبی*
 روش عضو جابگزیب (روش هنبگ) (3)

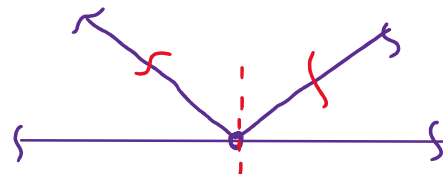
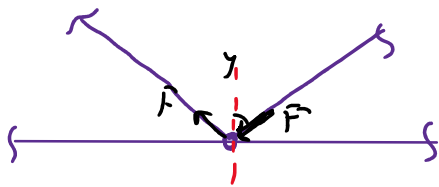
اعضای صفر نیروی



(1)



(2)

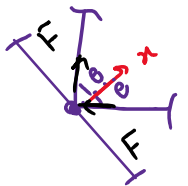
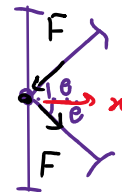
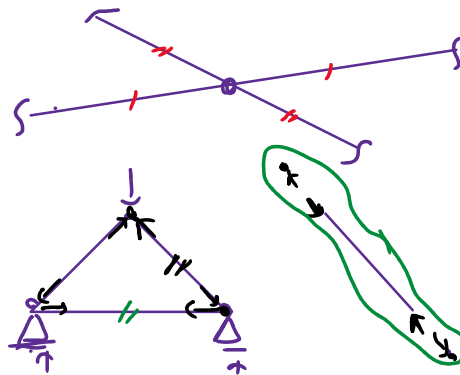
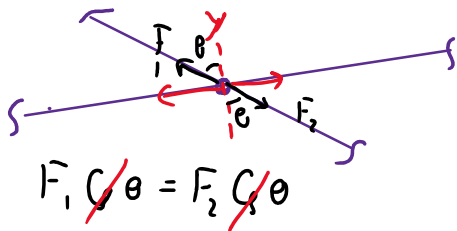


(3)

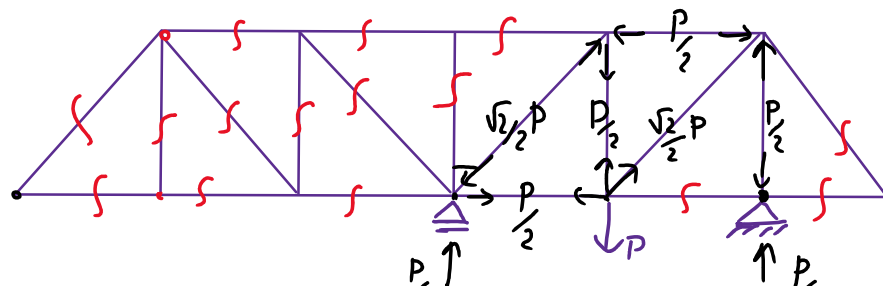
محور تقاطع

محور تقاطع

اعضای هم نیرو



$F_1 \cos \theta = F_2 \cos \theta$



$\frac{P}{2}$
P

